

# Eep Window restore Tool (V1.04)

This program is intended to use with EEP Eisenbahn Exe (Trendverlag GmbH). It can solve the problem that hidden windows in EEP can't be easily recovered, certainly when a larger screen resolution or text size (> 100%) is used.

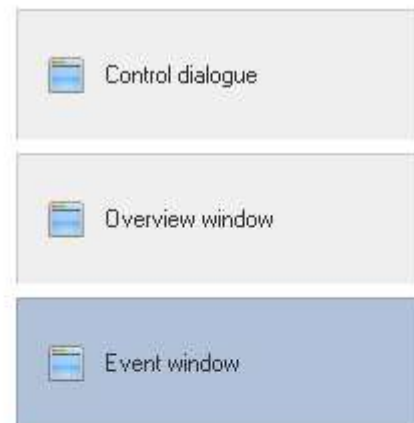
No installation is needed, just copy the program to a folder. It may be started with administrator rights if necessary.

## 1. The button menu

When started a button menu is shown in the middle of your screen. You can drag the window by placing the mouse cursor over the orange arrow circle and then hold the left button down to drag the window to another location.

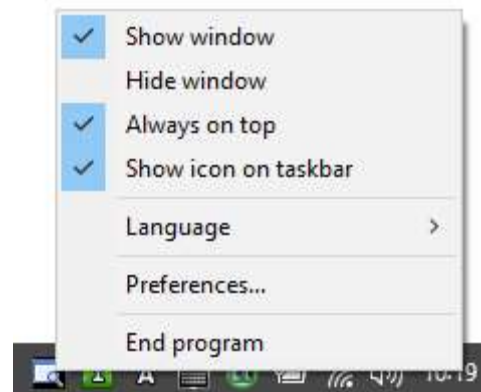
For each EEP window there is a button : the Control dialogue, the Overview window, the Event window and the Lua Script Editor (button is only visible when Lua Script Editor is opened). Clicking on one of these buttons will restore the corresponding window to a certain location (which can be managed – see further).

Note : the button menu is displayed initially in vertical order. This can be changed by a menu option (see further).



## 2. The program options menu

In the task list an icon is shown, this will give you access to the program options menu. Just click on the icon to open the menu.



If the icon is not visible, click on the small arrow, the icon is located in the icon tray.



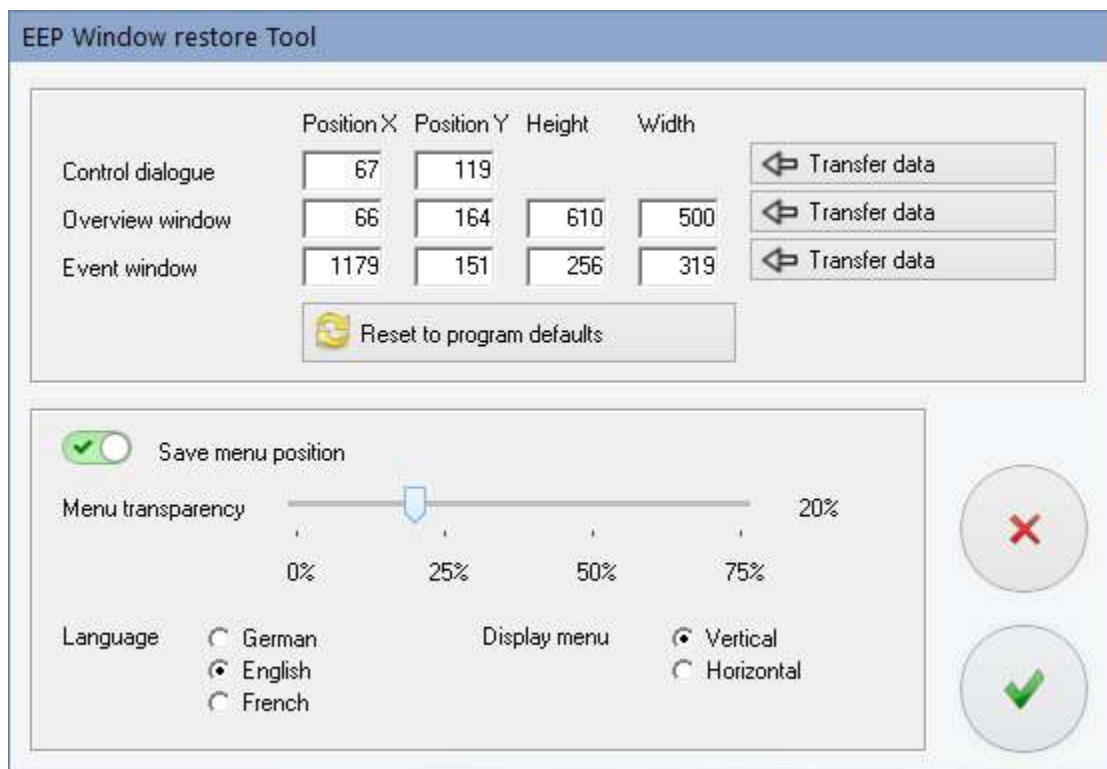
You can edit the settings in your Windows version to get the icon out of the icon tray and make it permanently visible.

Options :

- |                           |   |
|---------------------------|---|
| Show window / Hide window | Windows is visible or not                                 |
| Always on top             | Place window always on top or not                         |
| Show icon on taskbar      | Shows or hides the program icon on the taskbar            |
| Display menu              | Opens menu to select display (vertical or horizontal)     |
| Language                  | Opens menu to select the language of EEP (default German) |
| Preferences...            | Opens the settings window                                 |
| End program               | Ends the program  |

**3. The settings window**

After selecting the option "Preferences..." in the program menu, the settings window is opened.



Here you can enter the preferred coordinates of 3 windows which are used when these windows are restored. Only the Lua Script Editor window is always restored at the last location and has no entries.

With the 3 buttons ("Transfer data") the actual location of the windows can be read and entered in the different fields.

The button "Reset to program defaults" will set the coordinates to the initial program default values.

Other settings :

Save menu position	If enabled, menu will be restored on last location, otherwise in the middle of the screen
Menu transparency	Blend percentage of the menu
Language	Selected language of EEP (default German)
Display menu	Menu display layout (vertical or horizontal)

Changing the menu display layout will place the menu in the middle of the screen.

Pressing the green button will save the settings, the red button discards the changes.

## Disclaimer

This program is copyrighted and freeware, it may not be sold. This copyright and disclaimer notice protects the software author from any liability that might result, however remote, from the use of the software. Accordingly, the use of this notice is especially applicable to software made available for use beyond the author, and includes software distributed as "freeware" or open source via computer networks.

For software distributed on physical media (e.g. CD ROM), the copyright and disclaimer notice should be printed on an external label (as well as in any source code). For software binary code distributed over a network, the copyright notice should be embedded in a "readme.txt" file that is sent along with the software.

Copyright ©2020 EepNolie - N. Van Rompay (NR1)