

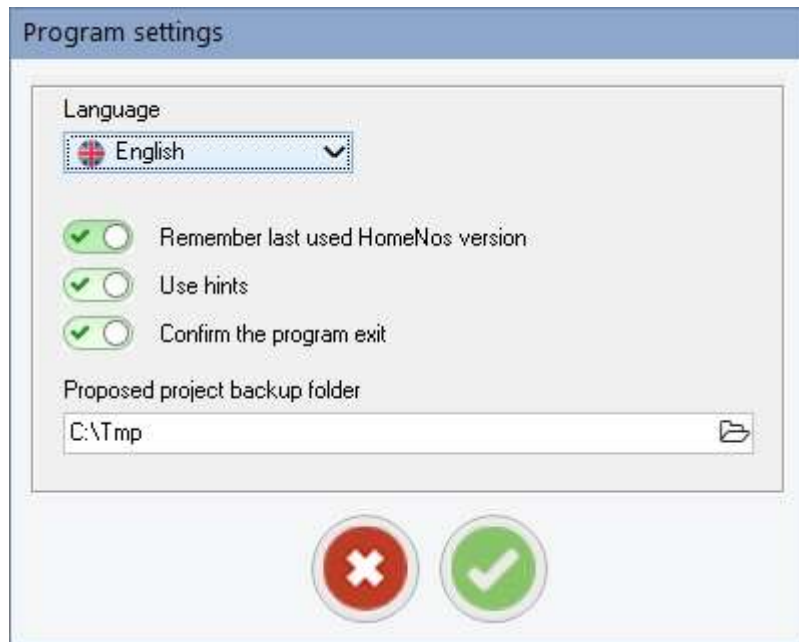
## HomeNos Project manager (2.xx)

This tool is intended for use with HomeNos versions 13 and above and gives you the possibility to handle your projects easily.

### 1. Program settings



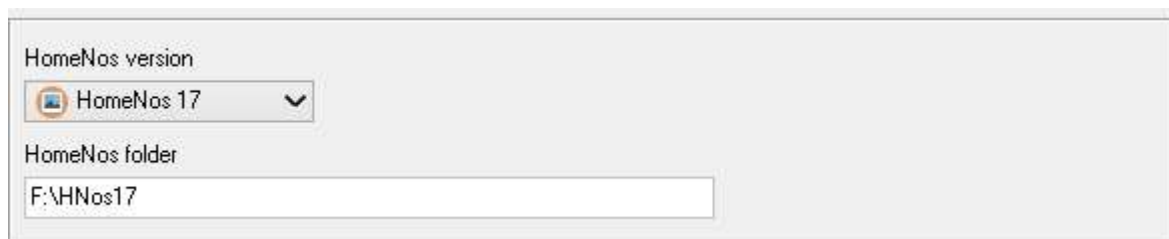
By clicking the settings button you can change the general program settings.



Language	Preferred program language (English, German, French, Spanish)
Remember last used HomeNos version	If selected the last used HomeNos version will be used at new program start
Use hints	Switches hints on/off
Confirm the program exit	Choice between warning/no warning to end the program
Proposed backup folder	Pre-set backup folder for making backups

### 2. Program interface

After starting the tool you will see the main program with a section to select one of the available HomeNos versions :



There are also 5 tabs, each with a specific function :

Copy	To copy a project
Rename	To rename a project
Backup	To backup a project to a zip-file
Delete	To delete a project (and move it to the recycle bin)
Clean	To search for .bak files in the selected HomeNos folder and delete these files if wanted

Available general buttons :



Opens the settings window



Opens a window with information about the program



Opens the manual, if no manual available the button is hidden



Closes the program, if confirmation is selected in the settings a warning window will be shown first

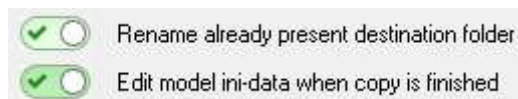
### 3. Copy a project

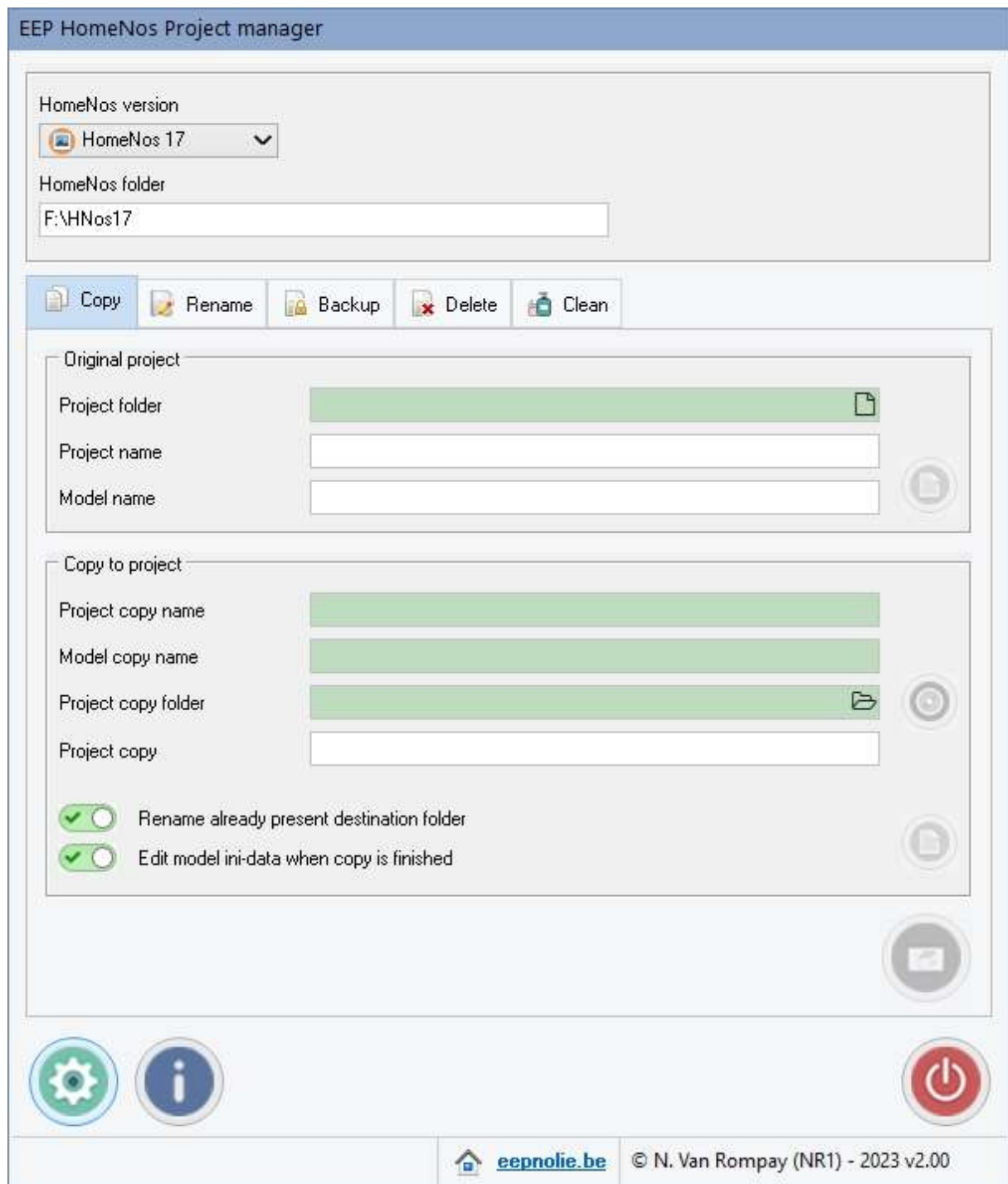
The first tab is intended for creating a copy of a project. The parts of this tab are :

- a section where you can select the project to be duplicated
- a section where you can edit the project copy name and model name

Also two sliders are available :

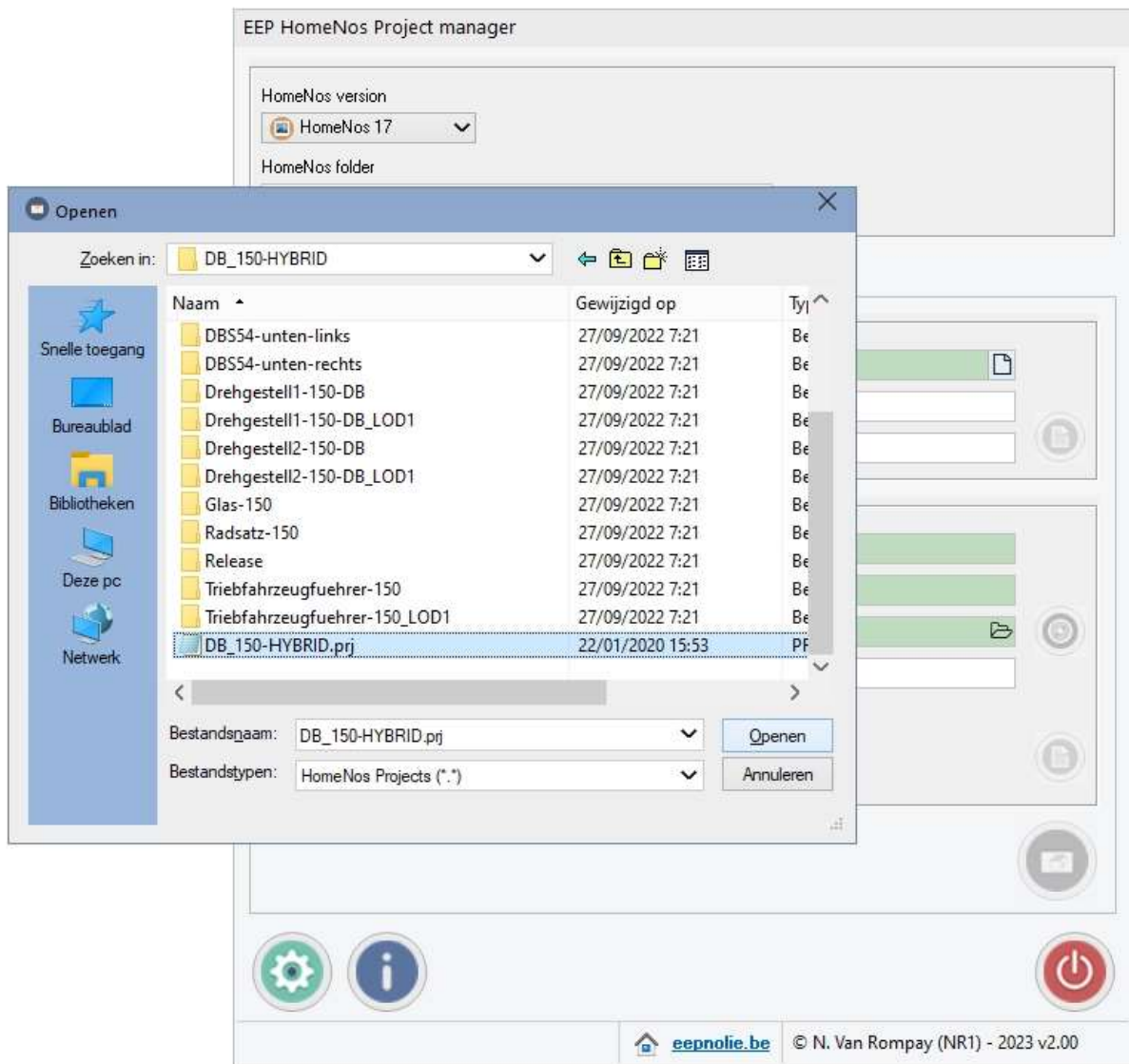
- a slider to select if an already existing destination folder should be renamed or overwritten (default is rename)
- a slider that invokes the opening of an edit window for the model ini-file after copying the project





To make a copy of a project first select the project to be copied by clicking on the small  button

Now select a project folder and then the project name (always .prj) :



The project sections are now filled with the necessary data :

Original project	
Project folder	DB_150-HYBRID
Project name	F:\HNos17\Projects\Rollmaterial\Lokomotiven\DB_150-HYBRID
Model name	DB_150-HYBRID_Test


Copy to project	
Project copy name	DB_150-HYBRID_copy
Model copy name	DB_150-HYBRID_Test_copy
Project copy folder	F:\HNos17\Projects
Project copy	F:\HNos17\Projects\DB_150-HYBRID_copy

Rename already present destination folder

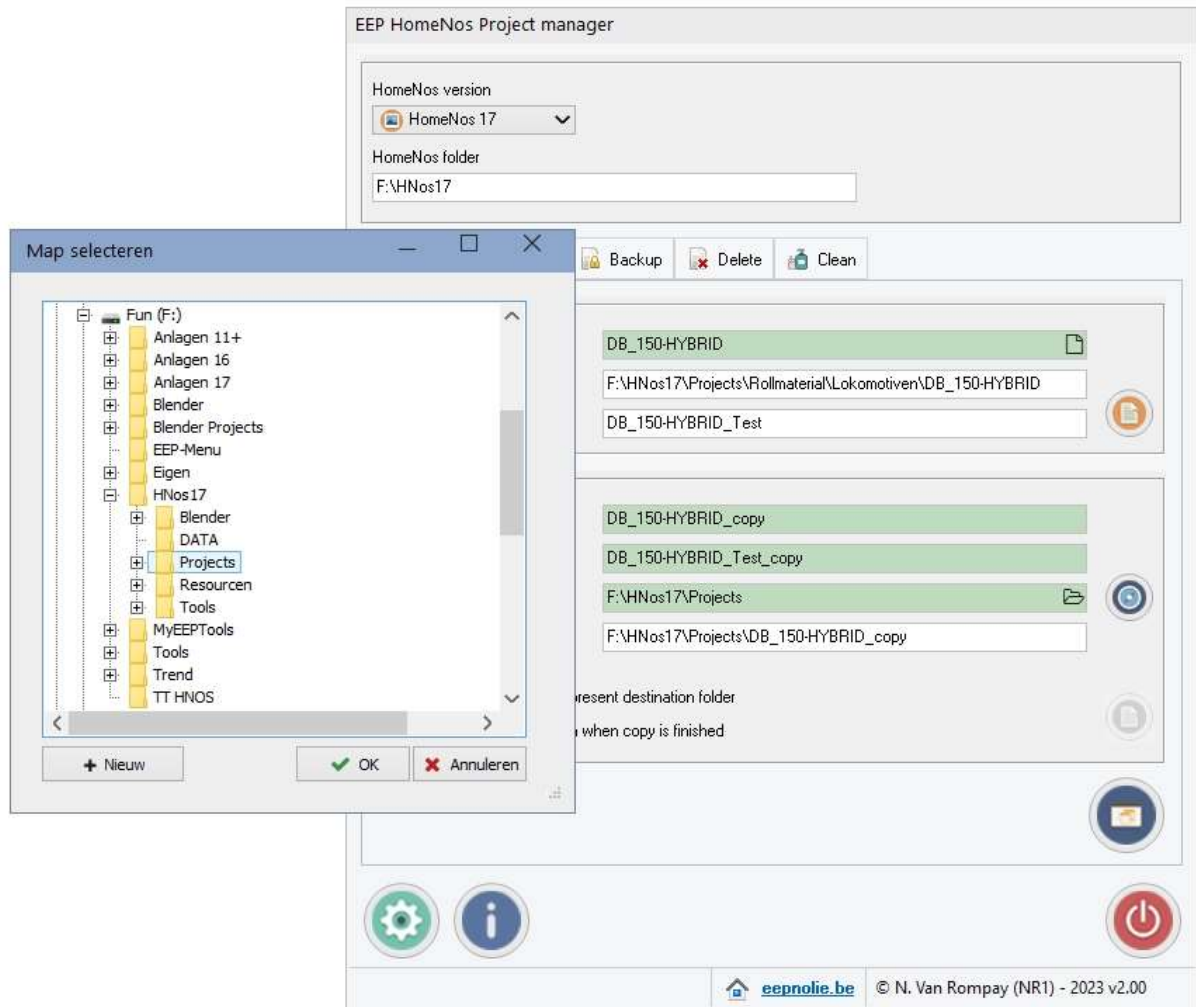
Edit model ini-data when copy is finished

The green fields are editable, you can change the project copy name and the model copy name, default the extension `_copy` is added.

A button to edit the original model ini-file is now available, if you need to change some things in this file you can do this before making a copy.

If you like to place the copied project in another folder than the HomeNos projects folder, just click on the folder button  in the field "Project copy folder".

A dialog is then opened to make the selection or even to add a new destination folder :



Extra buttons and functions :



With this button you can copy the name of the parent project folder directly to the project copy folder. This is useful when subfolders are used in the HomeNos projects folder.



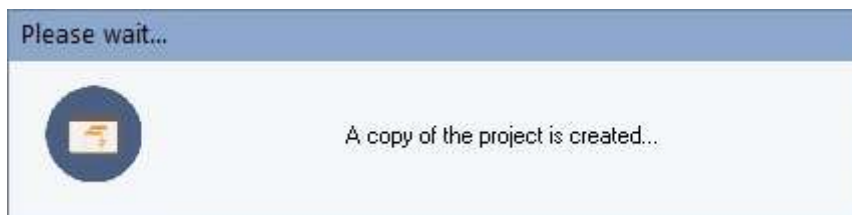
A left click with the mouse on the "Project copy" field opens a window where the path of the project copy is displayed. This is useful when the path is too long to be shown in the field.



Finally the button to make a copy becomes available.



Clicking on this button will make the project copy.



When the option *"Edit model ini-data when copy is finished"* is selected a window will open with the text of the ini-file, so you can edit this file :

Inifile editor - File copy

Name_ENG	<input type="text" value="DB_150-HYBRID_Test"/>	
Name_GER	<input type="text" value="DB_150-HYBRID_Test"/>	
Name_FRA	<input type="text" value="DB_150-HYBRID_Test"/>	
Name_POL	<input type="text" value="DB_150-HYBRID_Test"/>	
Icon	<input type="text" value="🚂 33"/>	
Generation	<input type="text" value="4"/>	
Deployment_Start	<input type="text" value="1963"/>	
Deployment_End	<input type="text" value="1973"/>	
Country	<input type="text" value="D"/>	
Creator_Model	<input type="text" value="OTHERS"/>	
Creator_Original	<input type="text" value="SK2"/>	
Description_ENG	<input type="text" value="DB_150-HYBRID_Test"/>	
Description_GER	<input type="text" value="DB_150-HYBRID_Test"/>	
Description_FRA	<input type="text" value="DB_150-HYBRID_Test"/>	
Description_POL	<input type="text" value="DB_150-HYBRID_Test"/>	

Additional lines

```

MovAxis9_ENG = "Current Collector 1"
MovAxis9_GER = "Stromabnehmer 1"
MovAxis9_FRA = "Collecteur de courant 1"
MovAxis9_POL = "Pantograf 1"
MovAxis14_ENG = "Current Collector 2"
MovAxis14_GER = "Stromabnehmer 2"
MovAxis14_FRA = "Collecteur de courant 2"
MovAxis14_POL = "Pantograf 2"

```

Add MovAxis to the editor (number 00 should be changed)

Font size:  (8 <> 16)

Font:  AbCdEfGhIj

If needed the font size and font style can be changed for easier editing.

Available buttons :

- Translate from English to the other languages
- Translate from German to the other languages
- Copy the namefields to the descriptions
- Clear the description fields
- Add text about MovAxis to the editor (00 should be changed afterwards with the right axis number)

Other available window buttons :



Confirm the changes and save the file



Discard the changes and don't save the file

If you need to edit the ini-files again after closing the window, the editor can be reopened by clicking on this small button (original or copy).



**Important** : some characters are not allowed in the project and model name. You will be warned if illegal characters are used :



#### 4. Rename a project

The second tab is intended for renaming an existing project. The parts of this tab are :

- a section where you can select the project to be renamed
- a section where you can edit the new project name

To select the project, follow the same procedure as described in the copy procedure above.



The project sections are now filled with the necessary data :

Original project	
Project name	DB_150-HYBRID_copy
Project folder	F:\HNos17\Projects\DB_150-HYBRID_copy
Model name	DB_150-HYBRID_Test_copy

Rename to project	
Project will be renamed to	DB_150-HYBRID_copy_rename

If preferred change the proposed new project name.



Clicking on this button will rename the project.



**Important** : some characters are not allowed in the project name. You will be warned if illegal characters are used :



After renaming the tab fields are cleared.

## 5. Backup a project

The third tab is intended for creating a backup of an existing project to a zipfile. The parts of this tab are :

- a section where you can select the project to be backed up
- a section where you can change the proposed backup folder (as set in the settings)

To select the project, follow the same procedure as described in the copy/rename procedures above.

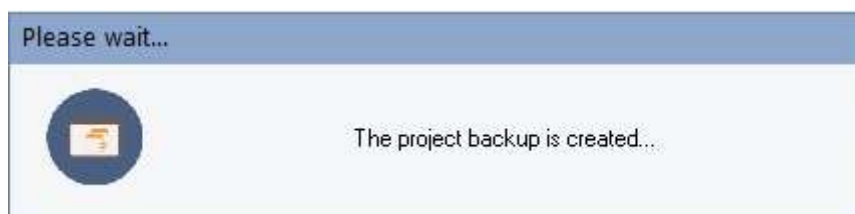
The project sections are now filled with the necessary data :

Original project	
Project name	DB_150-HYBRID_copy
Project folder	F:\HNos17\Projects\DB_150-HYBRID_copy
Backup project	
Project will be backed up to	C:\Tmp

If preferred change the proposed backup folder.



Clicking on this button will backup the project to a zipfile.



**Important** : some characters are not allowed in the backup folder name. You will be warned if illegal characters are used :



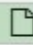
## 6. Delete a project

The fourth tab is intended for deleting an existing project to the recycle bin. The only part of this tab is :

- a section where you can select the project to be deleted

To select the project, follow the same procedure as described in the copy/rename/backup procedures above.

The project section is now filled with the necessary data :

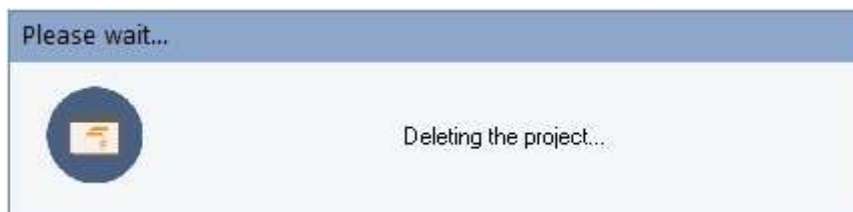
Project	
Project name	DAMPFLOK_S3-6-RG_copy_rename 
Project folder	F:\HNos17\Projects\DAMPFLOK_S3-6-RG_copy_rename

Before the project can be deleted, a slider must be set to confirm the deleting proces and to enable the button :

Confirm the deletion of the project



Clicking on this button will delete the project and place it in the recycle bin.



After deleting the tab fields are cleared.



Files can be selected/deselected by using the buttons or by clicking on a line in the filelist.



Clicking on this button will delete the selected files and place them in the recycle bin.



After deleting the selected files, the filelist is updated.

## Disclaimer

This software is copyrighted. This copyright and disclaimer notice protects the software author from any liability that might result, however remote, from the use of the software. Accordingly, the use of this notice is especially applicable to software made available for use beyond the author, and includes software distributed as "freeware" or open source via computer networks.

For software distributed with source code, the copyright and disclaimer notice should be imbedded within each file. For software distributed on physical media (e.g. CD ROM), the copyright and disclaimer notice should be printed on an external label (as well as in any source code). For software binary code distributed over a network, the copyright notice should be embedded in a "readme.txt" file that is sent along with the software.

Copyright ©2023 by N. Van Rompay (NR1)